

How to draw Bambi!

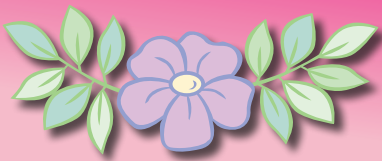


Learn to draw one of your favorite characters from BAMBI with celebrated Disney Animator, Andreas Deja.



© 2011 Disney.



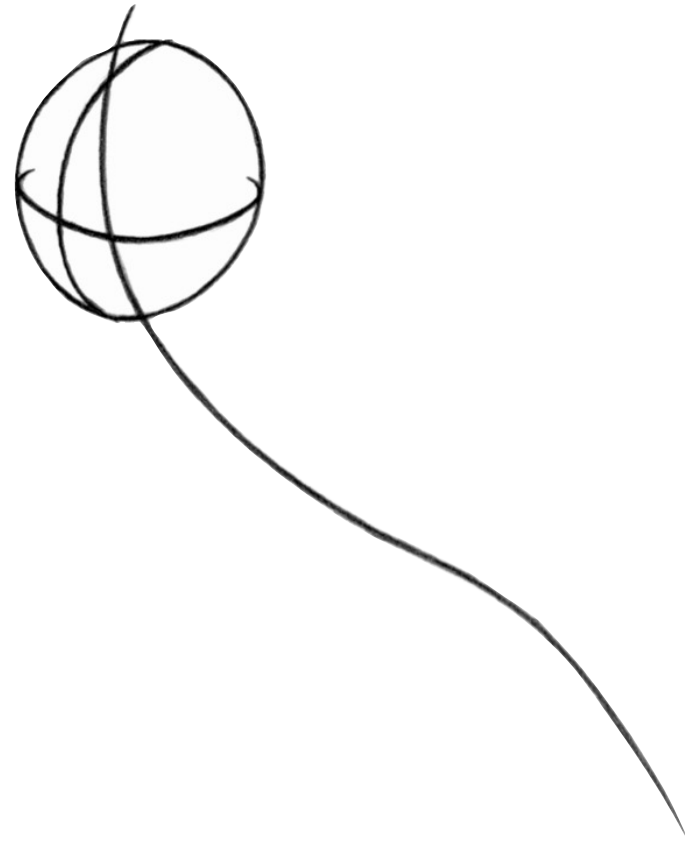


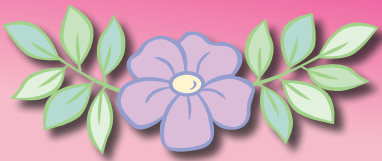
How to draw Bambi!



STEP 1

- Draw a very simple oval, then add a center line vertically and horizontally to establish Bambi's eye-line.
- Then, shape the main direction of Bambi's body by gently drawing a long, loose "S" shape.



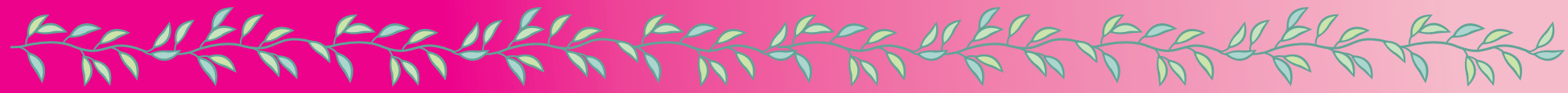
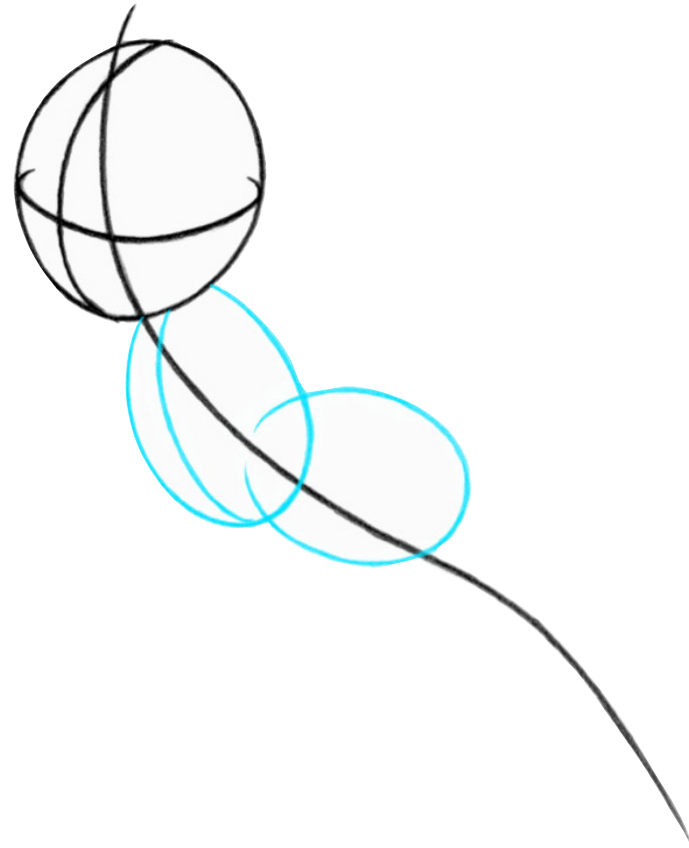


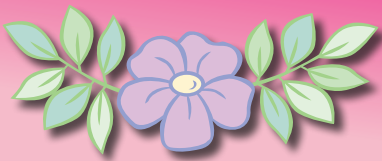
How to draw Bambi!



STEP 2

- Draw a small oval to establish Bambi's chest and another oval, horizontally, to establish the rear of his body.



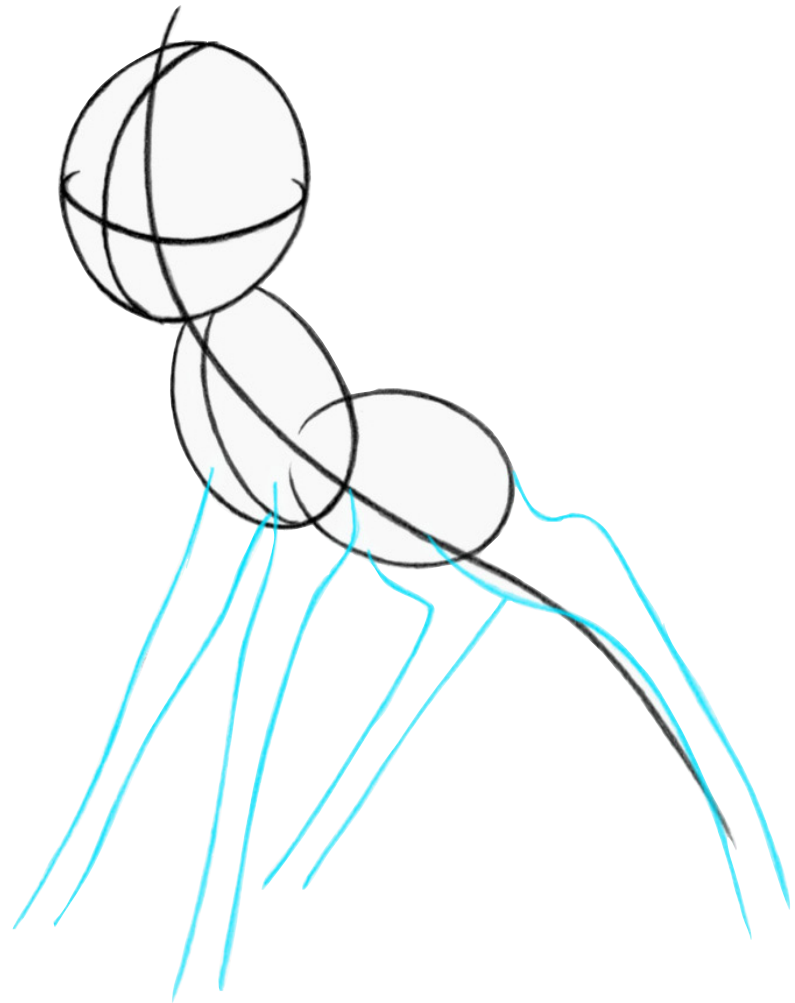


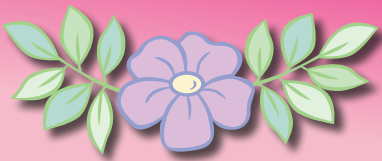
How to draw Bambi!



STEP 3

- Add Bambi's legs. As we'll be drawing Bambi as a young fawn, he has long, skinny legs.
- Follow the "S" line to establish Bambi's hind legs which will reach out in an upside-down "V" shape.



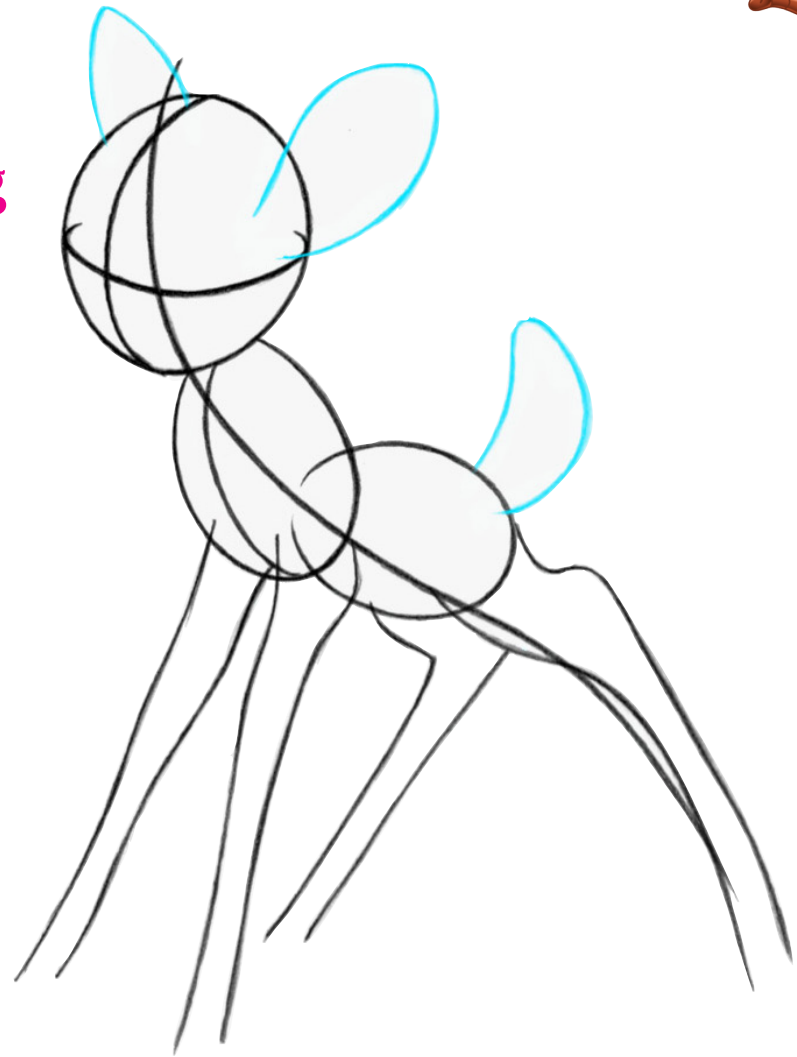


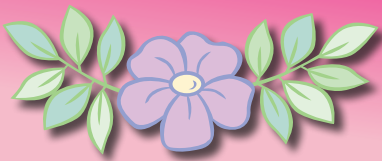
How to draw Bambi!



STEP 4

- Indicate where Bambi's ears and tail are, but drawing a sharp oval and a triangle.



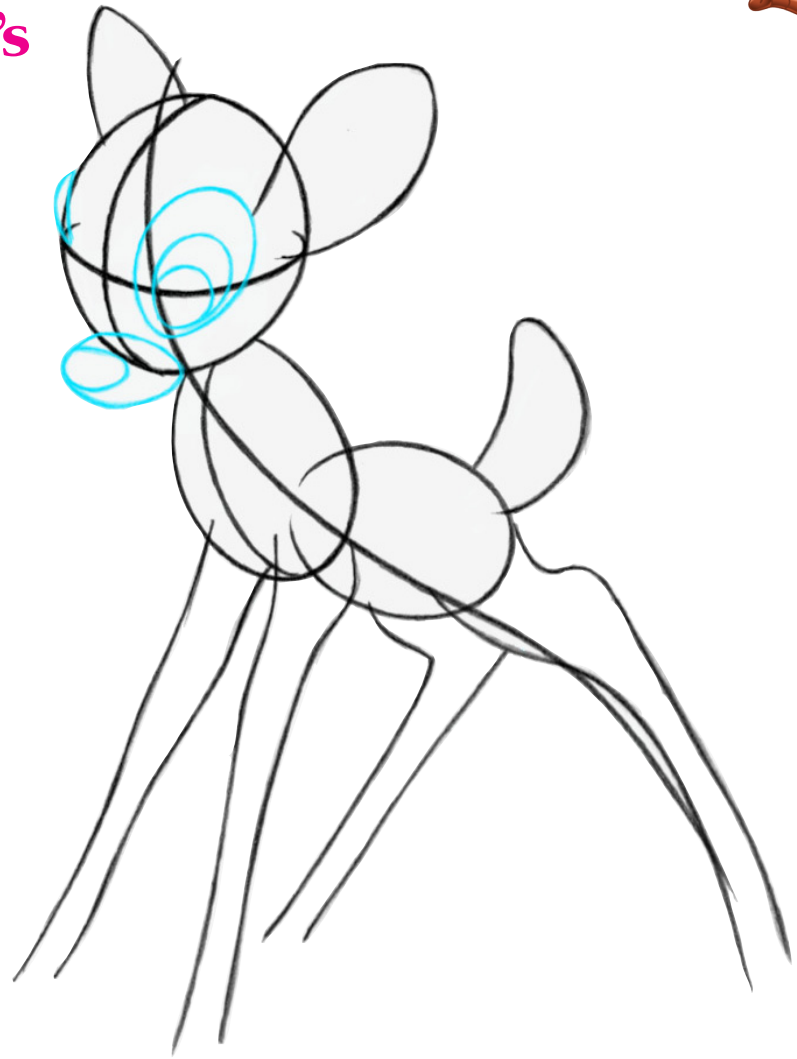


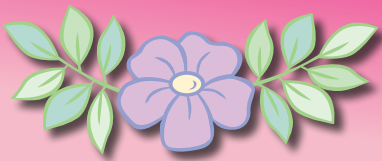
How to draw Bambi!



STEP 5

- Add detail to Bambi's face by defining his small nose, his muzzle and his eyes.



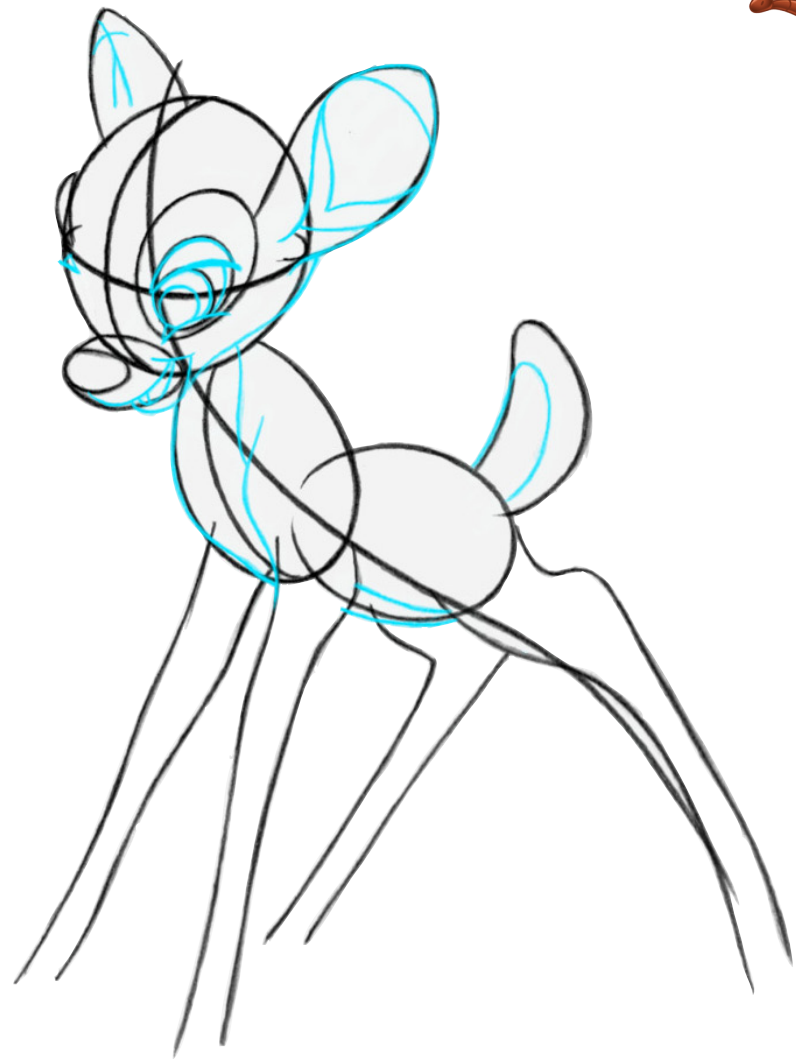


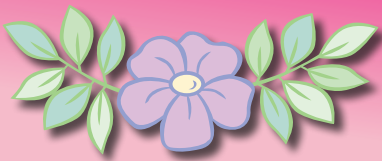
How to draw Bambi!



STEP 6

- Refine Bambi's ears, add details to his eyes, establish Bambi's chest and add a bit of fur all around.



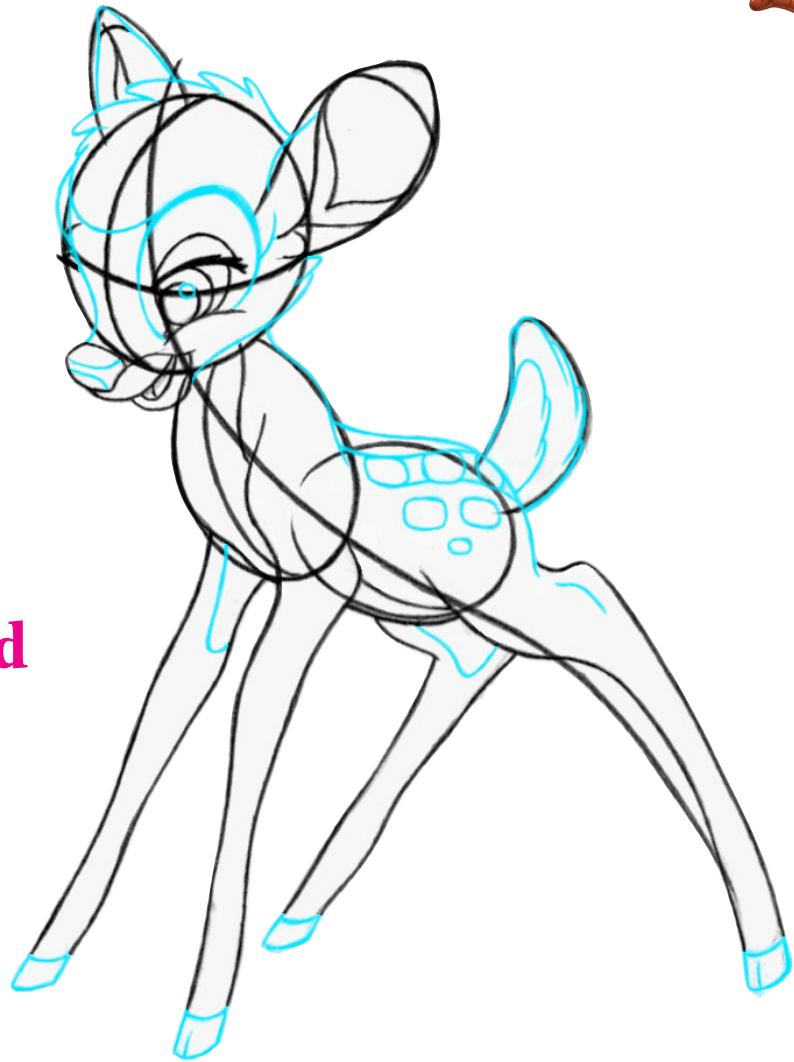


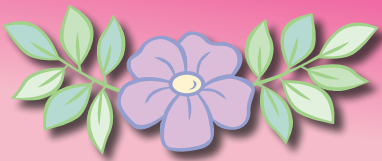
How to draw Bambi!



STEP 7

- Finally, add the details which will complete Bambi such as defining his spots and fluff-up his fur a bit.
- Don't forget to add his hooves, then shade in his eyes and darken his nose.





How to draw Bambi!



Practice these seven basic steps and you'll be drawing like a true Disney Animator!

Have fun!



**Now On
Blu-ray Combo Pack & DVD**